

# ALTRONICS Inc

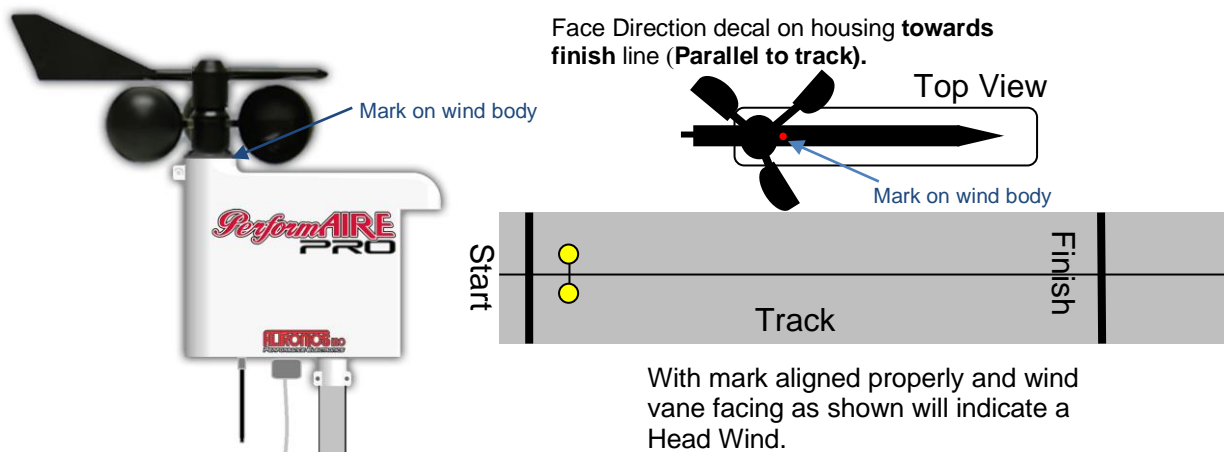
## PERFORMANCE ELECTRONICS

1411 S. Roselle Rd. Schaumburg, IL 60193

Phone (847) 923-0002

[www.AltronicsInc.com](http://www.AltronicsInc.com)

## PerformAIRE PRO INSTALLATION



### Installing RaceWORKS Software

**IMPORTANT:** Do not plug cable into computer until after RaceWorks has been installed.

- 1) To download RaceWORKS open your browser and go to: [AltronicsInc.com/downloads](http://AltronicsInc.com/downloads)
- 2) Login: **USER NAME:** raceworks **Password:** rw21
- 3) Download **raceworks.zip** file
- 4) You should see file downloading status pop up on screen, if not, file will be located in your **DOWNLOADS**
- 5) Open **raceworks.zip**, Find **setup.exe** (application) and RUN (double click), follow installation instructions. (click **Yes** or **Allow** if prompted)
- 6) To start RaceWORKS program, click on your **START** button, go to **PROGRAMS**, go to **RaceWORKS** or click on the



RaceWORKS icon on the Desktop.

- 7) **Detailed instructions, as well as videos on using software are available by selecting the "Help" menu icon once program has started.**

### Registering RaceWORKS Software

Within the first 30 days, you will be required to Register your Raceworks software to your computer. Registration must be completed on the computer you are going to use with the PerformAIRE system.

To register:

- 1) Open your **RaceWORKS** software, click on the **Setup** menu and click **Registration**.
- 2) Click on **STEP 1** and fill out form. Click -> **Create File**
- 3) This will create a file called **"registration.txt"** and will put a copy on your **Desktop**.
- 4) **STEP 2.** Open your email program of choice (e.g. yahoo, aol, gmail, outlook, etc) and Compose an email:  
To: [registration@altronicsinc.com](mailto:registration@altronicsinc.com)  
Subject: *RaceWORKS Registration*  
Attach: the **"registration.txt"** from your Desktop.  
(click on the "attach file button" (usually the button with a paper clip icon) and go to Desktop, select the **"registration.txt"** file and attach it to the email)
- 5) Send the email
- 6) Wait for our system to process your request and reply with the registration CODE, usually within 24 hours.
- 7) Go to STEP 3 and Enter the registration CODE that you received.
- 8) Your copy of Raceworks software is registered.

## Mounting System to Trailer



- 1) PerformAIRE PRO housing features a standard extension pole mount. If you did not purchase an extension pole with your system, you can use any typical extension pole found at a local hardware or home store. You can supply your own mounting method to securely affix pole to trailer or use Altronics Part #**ALT-PAPRO-CLAMP**.

If threaded area on mounting post is longer than 13/16", install rubber washers to shorten.

- 2) It is recommended to keep antenna on bottom of housing at least 3' from top of trailer.
- 3) Plug system cable into housing and run cable into trailer. Cable can be ran through trailer access port, door, or window etc... or use optional bulk head fitting supplied by Altronics Part #**ALT-PAPRO-CONNECTOR**.
- 4) Plug cable into USB port on computer.
- 5) Connect supplied power cable to 12v DC Source (Trailer battery or equivalent), fuse(3 amp fuse).

If a generator is connected to the battery note: Most high end generators provide clean power, if you are unsure we recommend high voltage transient suppression equipment (noise suppressor) connected in line to avoid "spiking" transmitter. If you have a 110AC power outlet, an adapter is available to connect to system and eliminate concern for noisy 12 volt power: Part #**ALT-PAPRO-PGPWR** (Do not use non-specified 110 Power adapter it WILL damage unit!)



Connect 12 volt power to jack in cable connector.

## Remote Display

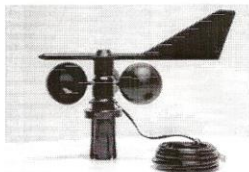
PerformAIRE PRO's *optional* remote Display Module Part #**ALT-PAPRO-DISPLAY** allows for viewing weather parameters without requiring system to be connected to a computer. Mount Display Module under cabinet or to trailer wall. Connect 9 pin connector on system cable to connector on back of Display Module housing. Plug 12 volt power cable into power jack on back of module. You can also connect Display Module to a computer, plug in USB cable into USB port on back of Display Module and then into USB port of computer.

## Wind Sensor Installation

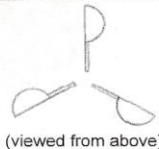
### Install Anemometer Cups

Plug each cup firmly into place on the anemometer rotor housing. Be sure that each cup arm snaps solidly.

NOTE: THE CUPS MUST BE ORIENTED AS SHOWN OR WIND DIRECTION WILL BE INCORRECTLY DISPLAYED, AND THE CUPS WILL NOT PROPERLY LOCK INTO PLACE.

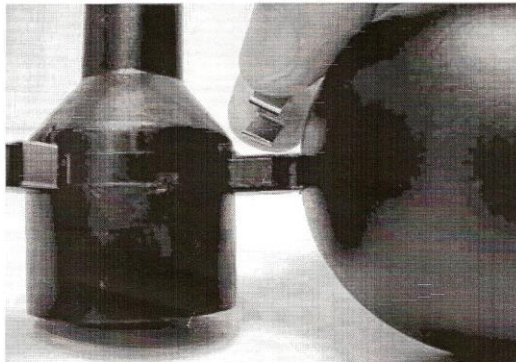


### CUP ORIENTATION



### Install Cup Retaining Clips

Spread the metal retaining clip apart and over the top of each cup connection as shown.



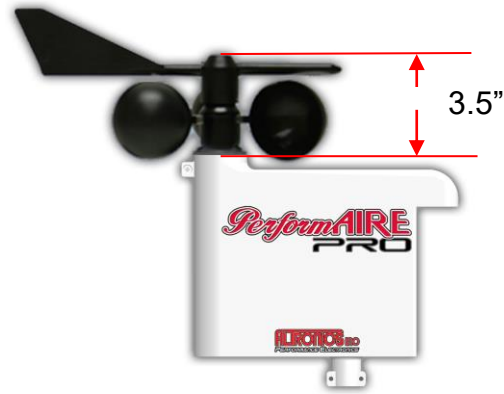
Press down until clip is FULLY seated. Press the sides of the clip to be sure the clip wraps around the bottom side of the cup connection.

### Install the Wind Vane Fin

Insert the fin into the open end of the wind vane pointer as shown. Press it firmly until a "snap" is felt.



**Make sure wind vane is snapped all the way down on assembly. If not all the way down wind direction reading may not function. Overall height of assembly is 3.5".**

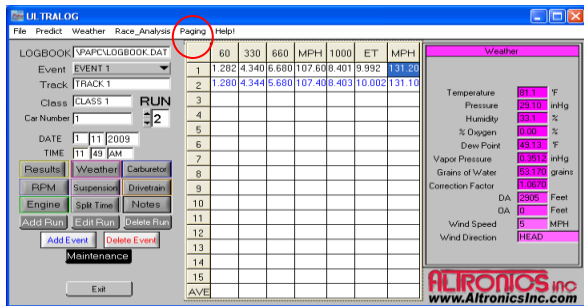


**NOTE:** If you install cups in the wrong direction you can remove them by first removing retaining clip and then by pulling firmly and quickly STRAIGHT away from mounting tabs. DO NOT try to bend, pry, twist, or rotate cup against mounting tabs as they can be easily broken. \*\*\*Disassembly – grasp both the cups/rotor assembly and the direction vane at the same time and pull off together from main body!!!\*\*\* Removing the vane by itself can easily break it.

### PAGING Systems

Detailed instructions on using and setting up the paging feature is available by selecting the “Help” menu icon once program has started.

- 1) Start RaceWORKS program
- 2) Select Paging Setup from the pull down Setup menu item.



- 3) Click in the Enable Paging check box.
- 4) Enter 7 Digit Cap Code from back of pager.
- 5) Ex: 0109002 (enter the “0”)
- 6) Click Save.
- 7) Exit program
- 8) Start RaceWORKS program
- 9) Paging will start automatically after 2 minutes

### Pager Instructions

Complete Pager Manual can be downloaded from the Tech Support page of our website.  
[www.AltronicsInc.com/tech-support](http://www.AltronicsInc.com/tech-support)



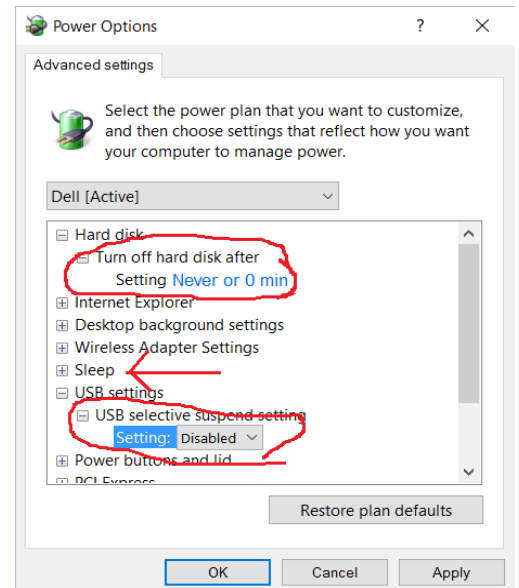
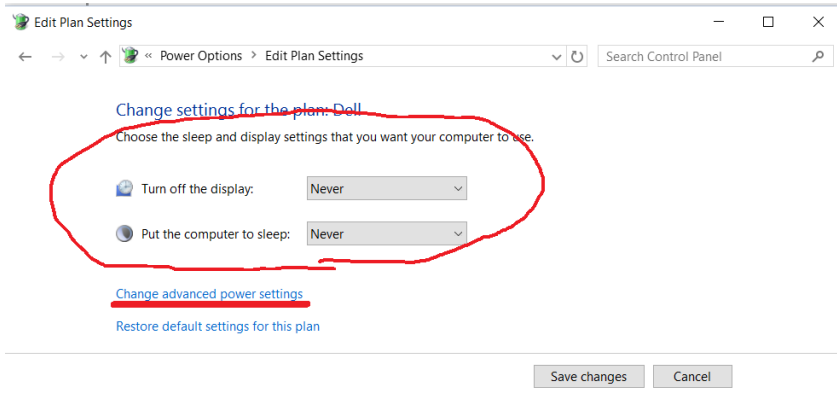
- 1) Pressing and holding Read button will turn pager on.
- 2) Pressing Read button will bring up most recent Page
- 3) Using Left/Right buttons will scroll thru Pages. Left-older Page
- 4) Up/Done will scroll through current Page.

Pager will show the last 20 pages. Oldest page will automatically get deleted when new page is received. Pages can be saved and deleted using the Function button and following menu icon. Pager can be turned off using Function button and Pager Off icon. Holding Function button will turn on Back Light.

## Your Computers Power Saving/Sleep Features

**IMPORTANT:** You must turn OFF your Sleep and Power Saving features in order to allow RaceWORKs to stream live weather information for extended periods of time without stopping. Some computers may have different features, but in general do the following:

- 1) Search for “Power and Sleep Settings”
- 2) Set Sleep to **NEVER** for both battery and plugged in.
- 3) Go to “Change Advanced Power settings”
  - a. Hard Drive – Turn off hard disk – set to NEVER or 0 minutes
  - b. Sleep – make sure all off Sleeps Modes are set to (NEVER)
  - c. USB settings – Selective Suspend (DISABLE)



## Connector Release

Release lever allows cable connector to be easily removed from housing figure 1. When inserting connector, align lever between tabs in connector as show in figure 2. After inserting connector lift lever in upper position. To remove connector, push lever down and lift up on connector as shown in figure 3.

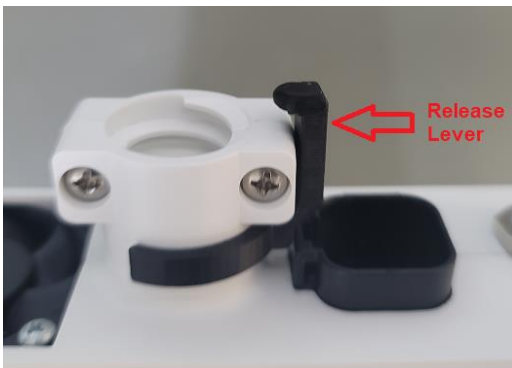


Figure 1

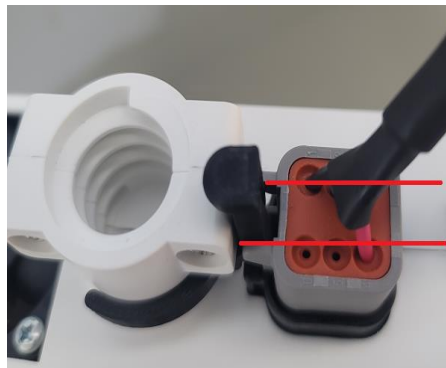


Figure 2



Figure 3